

DIGITAL CAMERA

*IST DS

*ist DS

Code No. 18996

Barcode 0027075086722

FOR A PERFECT ENTRANCE INTO DIGITAL SLR PHOTOGRAPHY

- > WORLD'S SMALLEST AND LIGHTEST DIGITAL SLR CAMERA WITH INTERCHANGEABLE LENSES
- > 6 MEGAPIXEL RESOLUTION
- > 23.5X15.7MM COLOUR CCD SENSOR FOR HIGH CONTRAST, LOW NOISE PHOTOGRAPHS
- > SIMPLE OPERATION WITH NUMEROUS AUTOMATIC FUNCTIONS AND PICTURE MODES FOR: ACTION, LANDSCAPE, PORTRAIT, MACRO, NIGHT PHOTOGRAPHY
- > PRECISION VIEWING USING AN ACCURATE PENTAPRISM VIEWFINDER WITH DIOPTRER CORRECTION AS WELL AS A 2.0" TFT LCD DISPLAY WITH 210,000 PIXELS RESOLUTION
- > ALMOST UNLIMITED PHOTOGRAPHIC POSSIBILITIES THANKS TO COMPATIBILITY WITH PREVIOUS LENS AND ACCESSORY SYSTEMS

Standard Accessories

AV Cable I-VC28	Code No. 39262
USB Cable I-USB17	Code No. 39233
Strap O-ST10	Code No. 39190
Hotshoe cover FK	Code No. 31040
Eyecup FL	Code No. 30132
Finder Cap M	Code No. 31011
Body Cap	Code No. 31016
Software S-SW28	
Batteries	

Accessories

Cable Switch CS-205	Code No. 37248
Camera Case O-CC10	Code No. 39185
Remote Control F	Code No. 37377
AC Adapter Kit	Code No. 39212

The manufacturer reserves the right to changes in specification, design, equipment and scope of supply without advance notice.



Lens

- PENTAX K_{AF} bayonet mount (by using AF adapter)
- PENTAX K_{AF2}-, K_{AF}-, and K_A-mount lenses. * Power zoom function not available. K-mount lenses usable with restrictions. S-mount lenses usable with adapter. 67/645 lenses usable with adapter and with restrictions.

CCD

- 6.31 megapixels total
- 6.1 megapixels effective
- Interline interlace CCD with a primary colour filter
- Colour depth: 12 Bit
- Sensitivity: 200/400/800/1600/3200 (Standard Output Sensitivity)

Viewfinder

- 2.0 inch low-temperature polysilicon TFT color LCD monitor (Approx. 210,000 pixels)

File formats

- Photo: JPEG (Exif 2.21), RAW, DCF (Design rule of Camera File system), DPOF (Digital Print Order Form), PRINT Image Matching III

Image storage

- SD memory card

Focus

- TTL Phase-matching 11-point autofocus system (SAFOX VIII), EV0 - EV19 (at Standard Output, Sensitivity 200 with 50mm F1.4 lens)
- Normal: 0.4m (1.31 ft) - infinity
- AF-single (with focus lock); Manual focus, AF-continuous in Action mode

Exposure

- TTL open-aperture 16-segment metering (coupled with lens and AF information), (1) Multi-segment metering (2) Center-weighted metering (3) Spot metering, EV 1 - 21.5 (at Standard Output, Sensitivity 200 with 50mm F1.4 lens)
- Electronically controlled vertical-run focal plane shutter
- Shutter speed: 1/4000 - 30sec. and bulb
- (1) Auto Picture mode (2) Picture mode (3) Program AE (4) Shutter-Priority AE (5) Aperture-Priority AE (6) Metered Manual
- Standard, Portrait, Landscape, Macro, Action, Night scene portrait, Standard Flash-Off, Fireworks
- ±2EV (1/2EV Steps or 1/3EV Steps)
- 3 frames within range of ±0.5EV, ±1.0EV, ±1.5EV (0.5EV steps) or ±0.3EV, ±0.7EV, ±1.0EV (0.3EV steps)

Flash

- Series-control retractable P-TTL pop-up flash
- GN: 15.6 (Standard Output Sensitivity 200/m)
- Coverage: 28mm wide-angle (equivalent to 35mm)
- Sync speed: 1/180 sec. set automatically with RTF or PENTAX dedicated flash unit at recharge completion

Power

- Four AA (lithium, alkaline, and rechargeable Ni-MH) batteries
- Two CR-V3 lithium batteries
- Optional AC adapter also available

Dimensions and weight

- 125(W) x 92.5(H) x 66(D)mm (4.9 x 3.6 x 2.6 inches)
- 605g operational
- 505g without battery or SD memory card

Connectivity

- USB 2.0 (HI-SPEED)
- AV Compatible with NTSC and PAL formats

more details on the back

PENTAX

Shooting parameters

- White balance: Auto, Daylight, Shade, Cloudy, Tungsten Light, Fluorescent Light (W, D, N), Manual setting
- Digital Filters: Black & White, Sepia, Soft, Slim
- Single-frame advance, continuous advance, self-timer, auto bracket and remote control

Special features

- Worldtime for 68 cities (28 time zones)
- Menu languages: English, French, German, Spanish, Italian, Russian, Korean, Chinese (Traditional/Simplified), Japanese
- Mode dial: (1) Auto Picture mode; (2) Standard mode; (3) Portrait mode; (4) Landscape mode; (5) Macro mode (6) Action mode, (7) Night scene portrait mode; (8) Standard Flash-Off mode; (9) Program AE; (10) Shutter-Priority AE; (11) Aperture-Priority AE; (12) Metered Manual; (13) Bulb
- Print Mode: Single image print, All images print, DPOF auto print

Resolution / File formats

Photo (RAW):

3008 x 2008
22

Photo (JPEG):

	3008 x 2000	2400 x 1600	1536 x 1024
Best	78	111	220
Better	149	201	354
Good	242	330	549

All capacities indicated are based on a 256MB memory card (optionally available)

System requirements

- PC: Windows Me, 2000, and XP HomeEdition/Professional.
- Mac: 9.01 or later with CarbonLib 1.5 or later

Software

- PENTAX PHOTO Browser 2.0 / PENTAX PHOTO Laboratory 2.0
PC: Windows Me, 2000, and XP (Pentium 4 or later), Memory capacity: Over 256MB (Over 512MB), Hard disk capacity: Over 250MB (Over 500MB)
Mac: OS 9.0 or later installed, POWER PC G3 or later (G4 1.0GHz or later), Memory capacity: Over 256MB (Over 512MB), Hard disk capacity: Over 250MB (Over 500MB)



Accessories (optional)



Remote control

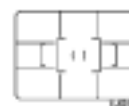


Cable release CS-205

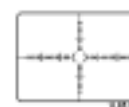
Focusing Screen



Framed Matte LF-60
(Code No. 38571)



Divided Matte LL-60
(Code No. 38572)



Scaled Matte LI-60
(Code No. 38573)

The manufacturer reserves the right to changes in technology, design, equipment and scope of supply without advance notice.

PENTAX